



Glass Fiber Reinforced Concrete - GFRC

We cast GFRC products in our plant in Juarez, Mexico. GFRC is glass fiber reinforced concrete and is made by combining a mixture of lightfast pigments, fine sand, cement, polymer, water, and alkali-resistant glass fibers.

Our GFRC products are available in five textures and a palette of colors. See all of these textures and colors on our Samples & Finishes page.

The glass fibers used in GFRC help give this unique compound its strength. Alkali-resistant fibers act as the principal tensile load-carrying member, while the polymer and concrete matrix bind the threads together and helps transfer loads from one fiber to another. Without fibers, GFRC would not possess its strength and would be more prone to breakage and cracking.

GFRC products have the appearance of poured concrete but are lighter and stronger. Thin layers of materials are hand-applied to mold interiors with added strength from

layers of fiberglass. Our production process is different for each of our GFRC textures. All GFRC products include binders to resist cracking and efflorescence.

Interior Sealant

Once cast, our planters have an interior sealant added as a water-resistant, damp-proofing layer to prevent most efflorescence and cracking.

Optional Waterproofing

TourneSeal, an optional waterproofing, can be applied to the planter interior. Once coated, we test for watertightness and recommend our customers do an additional test after installation before filling.

Exterior Sealant

Concrete is a porous surface that absorbs moisture and minerals, which can cause changes to the surface appearance. To preserve original appearance, our GFRC is sealed with clear concrete sealer.

GFRC - Lightweight Concrete



SHADOW
ACID ETCH



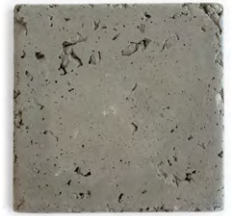
SHADOW
SANDBLAST



SHADOW
NATURAL SAND



SHADOW
FINE GRAIN



SHADOW
TRAVERTINE



SHARK
ACID ETCH



SHARK
SANDBLAST



SHARK
NATURAL SAND



SHARK
FINE GRAIN



SHARK
TRAVERTINE



PEARL
ACID ETCH



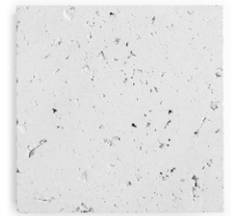
PEARL
SANDBLAST



PEARL
NATURAL SAND



PEARL
FINE GRAIN



PEARL
TRAVERTINE



CHALK
ACID ETCH



CHALK
SANDBLAST



CHALK
NATURAL SAND



CHALK
FINE GRAIN



CHALK
TRAVERTINE

GFRC - Lightweight Concrete



CHARCOAL
ACID ETCH



CHARCOAL
SANDBLAST



CHARCOAL
NATURAL SAND



CHARCOAL
FINE GRAIN



CHARCOAL
TRAVERTINE



CAROB
ACID ETCH



CAROB
SANDBLAST



CAROB
NATURAL SAND



CAROB
FINE GRAIN



CAROB
TRAVERTINE



CLAY
ACID ETCH



CLAY
SANDBLAST



CLAY
NATURAL SAND



CLAY
FINE GRAIN



CLAY
TRAVERTINE



SANDBOX
ACID ETCH



SANDBOX
SANDBLAST



SANDBOX
NATURAL SAND



SANDBOX
FINE GRAIN



SANDBOX
TRAVERTINE

GFRC - Lightweight Concrete



MIST
ACID ETCH



MIST
SANDBLAST



MIST
NATURAL SAND



MIST
FINE GRAIN



MIST
TRAVERTINE



RAIN
ACID ETCH



RAIN
SANDBLAST



RAIN
NATURAL SAND



RAIN
FINE GRAIN



RAIN
TRAVERTINE



CELERY
ACID ETCH



CELERY
SANDBLAST



CELERY
NATURAL SAND



CELERY
FINE GRAIN



CELERY
TRAVERTINE



MOSS
ACID ETCH



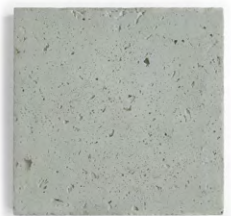
MOSS
SANDBLAST



MOSS
NATURAL SAND



MOSS
FINE GRAIN



MOSS
TRAVERTINE