

Materials & Finishes



GFRC LIGHTWEIGHT CONCRETE
FRP FIBERGLASS
POWDER-COATED
WEATHERING STEEL
WOOD VARIETIES
RECYCLED PLASTIC LUMBER

This document is intended as an overview of our materials & finishes. Images of samples are provided as a guide. Physical samples and swatch books can be ordered on our website at tournesol.com/finishes.

For more information about our materials, see tournesol.com/care.

GFRC - Lightweight Concrete

Available in five textures; Acid Etch, Sandblast, Travertine, Fine Grain, and Natural Sand. [View textures](#)



Two-Tone GFRC Planters

Lightweight GFRC planters in Chalk Sandblast, with one of six Natural Sand colors. [View textures](#)



FRP - Fiberglass

Available in three textures; Smooth, Rough Stucco, and Orange Peel. [View textures](#)



GFRC Lightweight Concrete

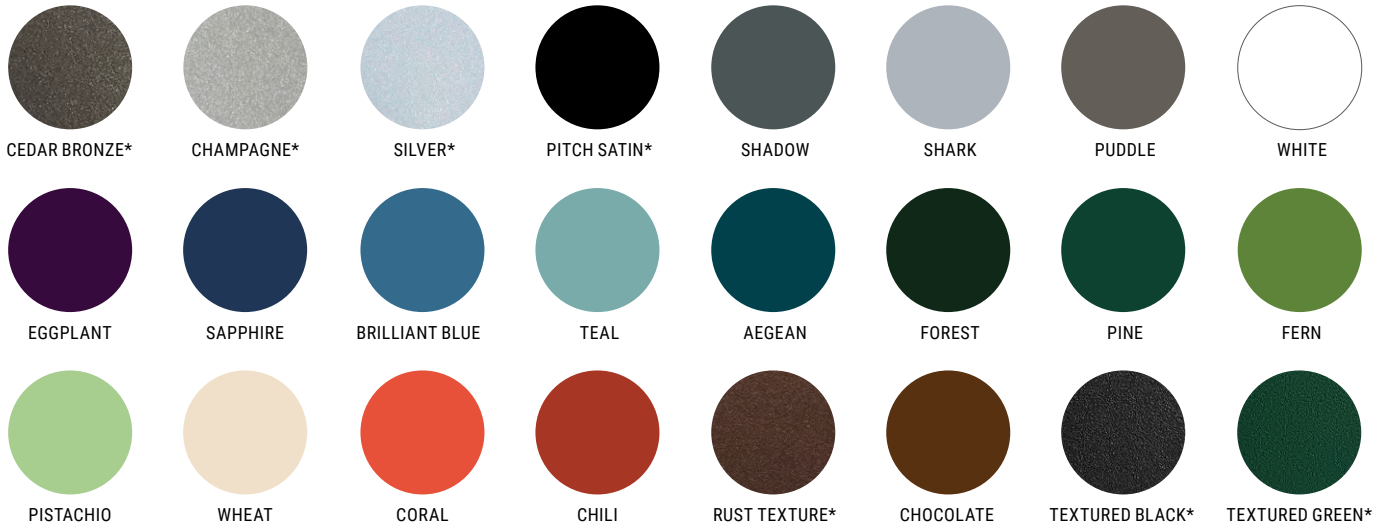
Our GFRC products are cast in our plant in Juarez, Mexico. GFRC is glass fiber reinforced concrete. It's made by combining a mixture of fine sand, cement, polymer, water, other admixtures, and alkali-resistant glass fibers.

FRP Fiberglass

Our commercial-grade FRP planters are highly durable, last longer than plastic, and will endure in most winter climates. Our labor-intensive process results in a uniform, consistent quality product. Available in three textures; Smooth, Rough Stucco, and Orange Peel.

Powder-Coat Finishes [View details](#)

*Our standard powder-coat colors come in semi-gloss, except Pitch Satin, Textured Black, Textured Green, Rust Texture, and Metallic colors.



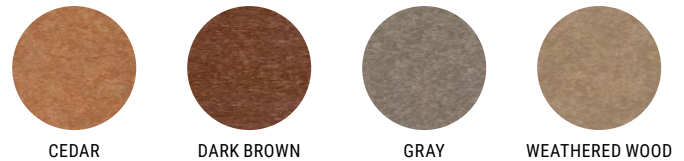
Weathering Steel [View details](#)

Our weathering steel products are A588 and A606 grade, shipped un-weathered or pre-weathered.



Recycled Plastic [View details](#)

Our durable recycled plastic lumber, made from post-consumer milk bottles, is 90% recyclable and retains color with UV protection.



Wood [View details](#)

All wood species change color over time when exposed to UV light. Our wood products will arrive with a UV protectant oil, this can slow this process down.





Glass Fiber Reinforced Concrete - GFRC

We cast GFRC products in our plant in Juarez, Mexico. GFRC is glass fiber reinforced concrete and is made by combining a mixture of lightfast pigments, fine sand, cement, polymer, water, and alkali-resistant glass fibers.

Our GFRC products are available in five textures and a palette of colors. See all of these textures and colors on our Samples & Finishes page.

The glass fibers used in GFRC help give this unique compound its strength. Alkali-resistant fibers act as the principal tensile load-carrying member, while the polymer and concrete matrix bind the threads together and helps transfer loads from one fiber to another. Without fibers, GFRC would not possess its strength and would be more prone to breakage and cracking.

GFRC products have the appearance of poured concrete but are lighter and stronger. Thin layers of materials are hand-applied to mold interiors with added strength from

layers of fiberglass. Our production process is different for each of our GFRC textures. All GFRC products include binders to resist cracking and efflorescence.

Interior Sealant

Once cast, our planters have an interior sealant added as a water-resistant, damp-proofing layer to prevent most efflorescence and cracking.

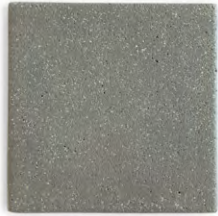
Optional Waterproofing

TourneSeal, an optional waterproofing, can be applied to the planter interior. Once coated, we test for watertightness and recommend our customers do an additional test after installation before filling.

Exterior Sealant

Concrete is a porous surface that absorbs moisture and minerals, which can cause changes to the surface appearance. To preserve original appearance, our GFRC is sealed with clear concrete sealer.

GFRC - Lightweight Concrete



SHADOW
ACID ETCH



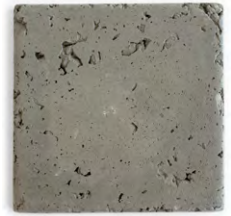
SHADOW
SANDBLAST



SHADOW
NATURAL SAND



SHADOW
FINE GRAIN



SHADOW
TRAVERTINE



SHARK
ACID ETCH



SHARK
SANDBLAST



SHARK
NATURAL SAND



SHARK
FINE GRAIN



SHARK
TRAVERTINE



PEARL
ACID ETCH



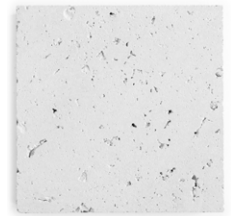
PEARL
SANDBLAST



PEARL
NATURAL SAND



PEARL
FINE GRAIN



PEARL
TRAVERTINE



CHALK
ACID ETCH



CHALK
SANDBLAST



CHALK
NATURAL SAND



CHALK
FINE GRAIN



CHALK
TRAVERTINE

GFRC - Lightweight Concrete



CHARCOAL
ACID ETCH



CHARCOAL
SANDBLAST



CHARCOAL
NATURAL SAND



CHARCOAL
FINE GRAIN



CHARCOAL
TRAVERTINE



CAROB
ACID ETCH



CAROB
SANDBLAST



CAROB
NATURAL SAND



CAROB
FINE GRAIN



CAROB
TRAVERTINE



CLAY
ACID ETCH



CLAY
SANDBLAST



CLAY
NATURAL SAND



CLAY
FINE GRAIN



CLAY
TRAVERTINE



SANDBOX
ACID ETCH



SANDBOX
SANDBLAST



SANDBOX
NATURAL SAND



SANDBOX
FINE GRAIN



SANDBOX
TRAVERTINE

GFRC - Lightweight Concrete



MIST
ACID ETCH



MIST
SANDBLAST



MIST
NATURAL SAND



MIST
FINE GRAIN



MIST
TRAVERTINE



RAIN
ACID ETCH



RAIN
SANDBLAST



RAIN
NATURAL SAND



RAIN
FINE GRAIN



RAIN
TRAVERTINE



CELERY
ACID ETCH



CELERY
SANDBLAST



CELERY
NATURAL SAND



CELERY
FINE GRAIN



CELERY
TRAVERTINE



MOSS
ACID ETCH



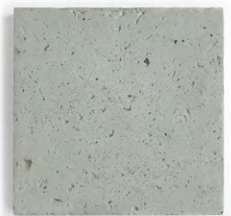
MOSS
SANDBLAST



MOSS
NATURAL SAND



MOSS
FINE GRAIN



MOSS
TRAVERTINE



CHALK SANDBLAST + SHADOW NATURAL SAND



CHALK SANDBLAST + SHARK NATURAL SAND



CHALK SANDBLAST + PEARL NATURAL SAND



CHALK SANDBLAST + CLAY NATURAL SAND



CHALK SANDBLAST + CELERY NATURAL SAND



CHALK SANDBLAST + MIST NATURAL SAND

Two-Tone Planter Finishes

Starting with our iconic Bolinas, Urban Round, and Wilshire Round planters, the new Two-Tone Planter Collection elevates these classic forms with added depth, contrast, and a bold, graphic look.

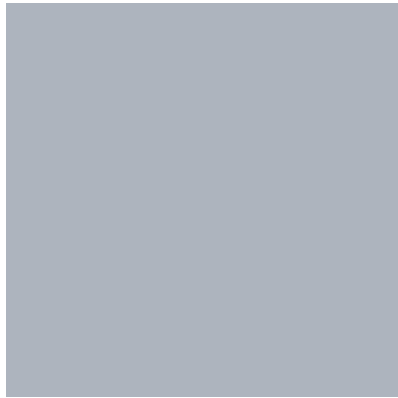
Lightweight GFRC planters in textured Chalk Sandblast are finished in one of six Natural Sand colors, enhancing their sculptural quality and dimensional presence.



Fiberglass - FRP

Our commercial-grade FRP planters are highly durable, last longer than plastic, and will endure in most winter climates. Our labor-intensive process results in a uniform, consistent quality product; a great lightweight choice for rooftop applications. FRP is available in 3 textures; Smooth, Rough Stucco, and Orange Peel.

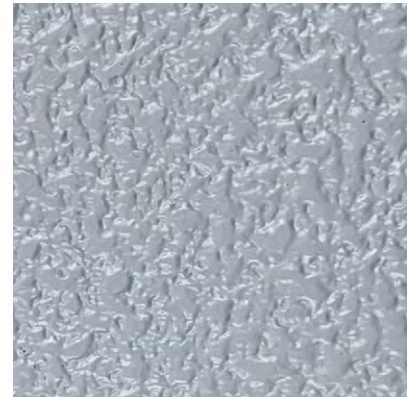
FRP - Fiberglass



TEXTURE: SMOOTH
Shown in Shark



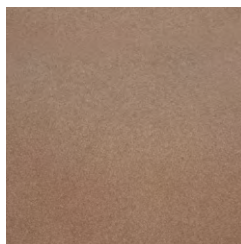
TEXTURE: ROUGH STUCCO
Shown in Shark



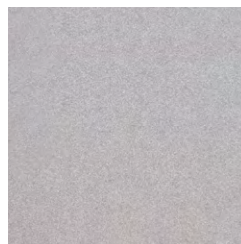
TEXTURE: ORANGE PEEL
Shown in Shark



IRON
SMOOTH



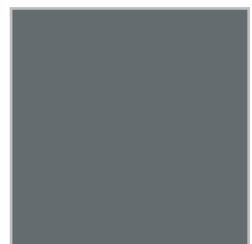
BRONZE
SMOOTH



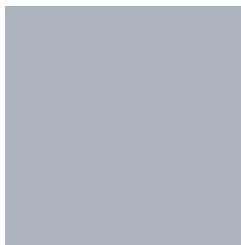
SILVER
SMOOTH



PITCH
SMOOTH



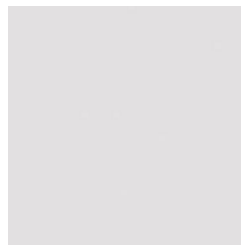
SHADOW
SMOOTH



SHARK
SMOOTH



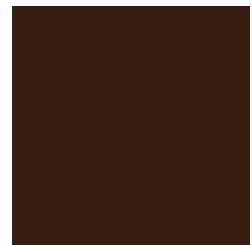
PUDDLE
SMOOTH



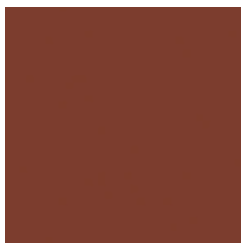
SMOKE
SMOOTH



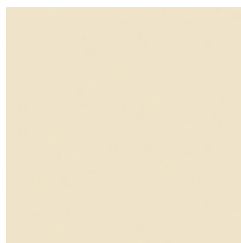
WHITE
SMOOTH



CHOCOLATE
SMOOTH



TERRA COTTA
SMOOTH



REED
SMOOTH



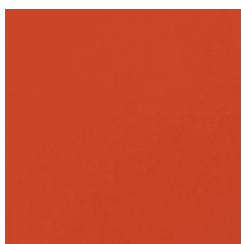
CITRON
SMOOTH



CARIBBEAN
SMOOTH



SAGE
SMOOTH



TOMATO
SMOOTH



ROYALTY
SMOOTH



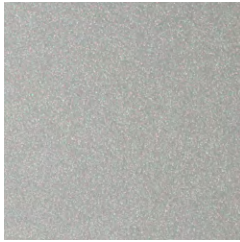
BASIL
SMOOTH

Powder-Coat Finishes

Standard Powder-Coat colors are semi-gloss, *except Pitch Satin, Textured Black, Textured Green, Rust Texture, Cedar Bronze, Champagne and Silver. Rust Texture appears brighter in sunlight. Order a Swatch Book or sample at tournesol.com/samples.



SILVER*
TIGER DRYLAC 149/90500



CHAMPAGNE*
TIGER DRYLAC 049/91558



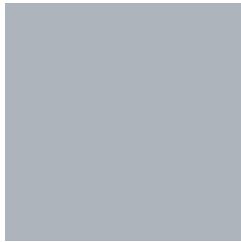
CEDAR BRONZE*
TIGER DRYLAC 49/61120



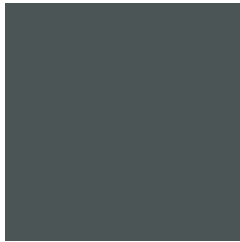
RUST TEXTURE*
CARDINAL T091-BR47



PITCH SATIN*
CARDINAL T002-BK08



SHARK
TIGER DRYLAC 138/70038
RAL 7038



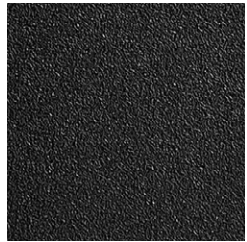
SHADOW
TIGER DRYLAC 49/71180
RAL 7012



PUDDLE
TIGER DRYLAC 138/70022
RAL 7022



CHOCOLATE
TIGER DRYLAC 49/66080
RAL 8016



TEXTURED BLACK*
TIGER DRYLAC 059/81073
SD BLACK SUPER TEX FT



PISTACHIO
TIGER DRYLAC 49/51000
RAL 6019



FERN
TIGER DRYLAC 49/52670
RAL 6025



FOREST
TIGER DRYLAC 49/50009
RAL 6009



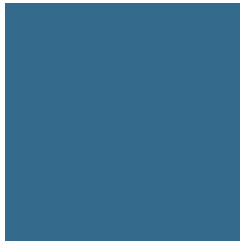
PINE
TIGER DRYLAC 49/50002
RAL 6005



TEXTURED GREEN*
AkzoNobel JM351QF Interpon 600
TDS EXTRA GREEN



TEAL
TIGER DRYLAC 138/50034
RAL 6034



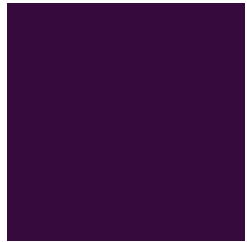
BRILLIANT BLUE
TIGER DRYLAC 49/42250
RAL 5007



SAPPHIRE
TIGER DRYLAC 49/42230
RAL 5003



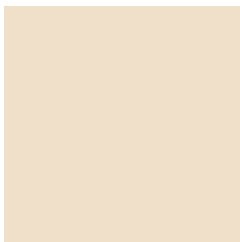
AEGEAN
TIGER DRYLAC 49/44270
RAL 5020



EGGPLANT
TIGER DRYLAC 49/32540
RAL 4007



WHITE
TIGER DRYLAC 138/10010
RAL 9016



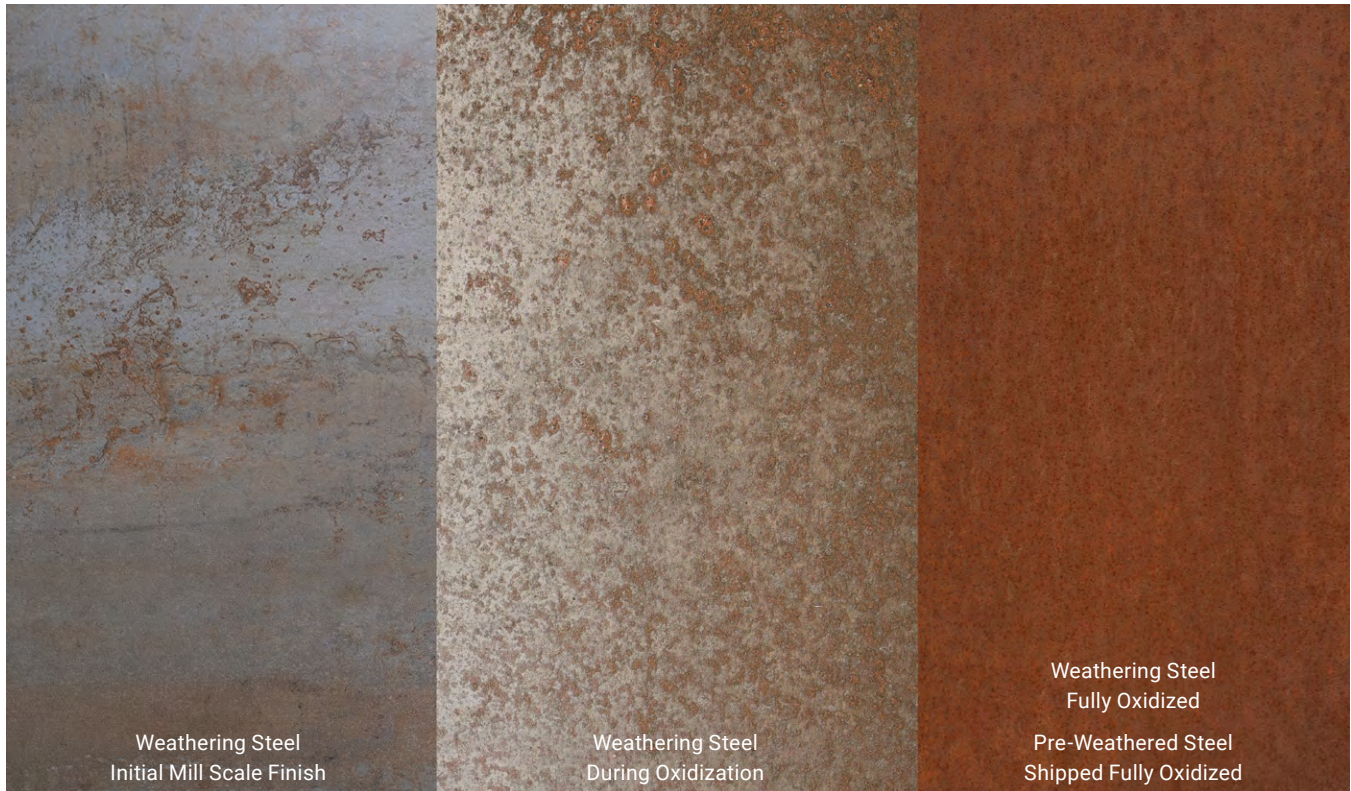
WHEAT
TIGER DRYLAC 49/11280
RAL 1013



CORAL
TIGER DRYLAC 49/24690
RAL 2012



CHILI
TIGER DRYLAC 49/31950
RAL 3013



Weathering Steel

Weathering Steel planters offer a warm industrial aesthetic favored by many landscape architects. The natural red-orange oxidization forms a protective patina that develops and regenerates continuously. Our A588 and A606 grade steel planters are meticulously assembled and welded, and come with stainless steel bases to extend their lifespan.

Weathering Steel

Our Weathering Steel ships with a natural mill scale finish. The initial oxidation develops within weeks and evolves over time. Environmental conditions such as humidity, salt, and the temperature at installation can affect rust uniformity and formation rate. The color develops from a vibrant orange to a deep reddish-brown.

Pre-Weathered Steel

Our Pre-Weathered Steel finishing treatment process helps to accelerate the natural weathering look of steel. Pre-Weathered Steel products undergo an earth-friendly

pre-treatment, which steps up the oxidation process timeline to help achieve the desired visual result faster.

Our process begins by grit-blasting the raw mill scale surface; next we treat it with an all-natural solution of hydrogen peroxide, vinegar, and salt. Treated products cure for a day before being individually wrapped in paper and then plastic before shipping.

Raw mill scale steel and treated surfaces can be powdery and may show markings during delivery and installation. These changes are affected by humidity levels and storage.

Weathering Steel products should be unwrapped upon arrival and stored indoors if possible. Shedding during unpacking and storing may occur; protect flooring during storage and installation.



Thermally Modified Hardwood

Our thermally modified wood is manufactured from hardwoods harvested in the Northeast, typically Oak. The wood is thermally processed in a kiln, producing a deep, rich color. Color and grain vary.

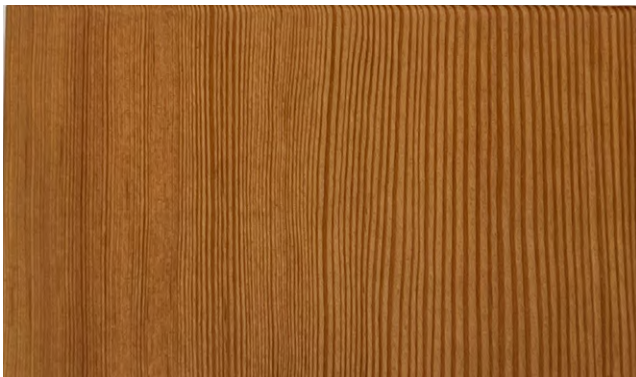
Like all natural wood products, thermally modified wood will turn silver/gray once exposed to UV sunlight.

For more info: tournesol.com/fabrication-and-materials



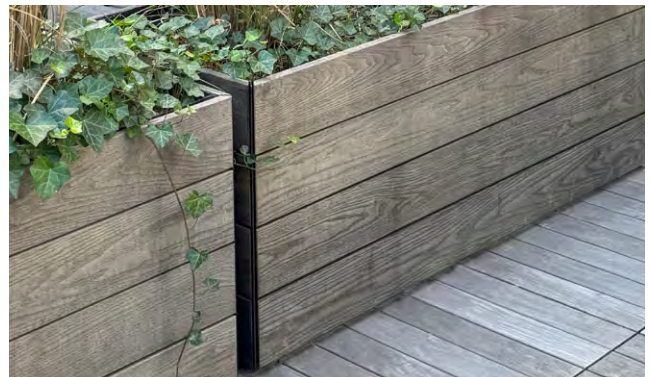
Red Cedar

A softwood tree, highly valued for its resistance to decay and insects, durability, and attractive reddish-brown color. The wood is lightweight yet solid and stable, with a straight, uniform grain and a fine, even texture. Red Cedar has a pleasant, distinctive aroma due to the natural oils that help protect it from decay and insects.



Douglas Fir

A coniferous, softwood tree commonly found in western North America, Douglas Fir is a strong and dense wood with a high stiffness-to-weight ratio. It has a straight grain and a moderately coarse texture with a reddish-brown color. Highly resistant to decay and insect damage, its properties present strength, durability, and versatility for outdoor applications.



Wood color changes over time

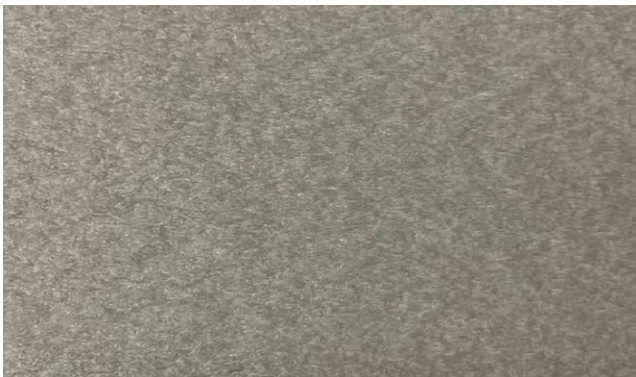
All wood species change color over time when exposed to UV light. Our wood products will arrive with a UV protectant oil, which will slow this process down, but does not prevent the color from aging.



CEDAR



DARK BROWN



GRAY



WEATHERED WOOD

Recycled Plastic Lumber

Our recycled plastic lumber is a milk-bottle based, recycled plastic lumber which maintains its structure and durability.

This recycled plastic lumber is 90% recyclable, and 90% is post-consumer content and reduces the demand for virgin plastic or wood.

Utilizing recycled plastic lumber helps divert plastics from landfills, reducing environmental pollution and promoting waste management.

Reduction of Environmental Impact: Choosing recycled plastic lumber for park furniture and other applications helps minimize environmental damage by avoiding the depletion of natural resources and reducing energy consumption.

Durability and Longevity: Recycled plastic lumber is resistant to cracking, splitting, and rot, which enhances its lifespan compared to traditional wood materials, reducing the need for frequent replacements and conserving resources in the long term.