

Anchor Installation Instructions

This instruction is a guide for the installation and anchoring of the Pebble GFRC benches.



INCLUDED

GFRC Bench	
Concealed Anchor Brackets	2 per bench
w/1/2" SST Hex Bolt & Nut	1 per bracket
3/8"-16 x 1" SST Hex Bolt	4 per bench
3/8" SST Split Lock Washer	4 per bench
3/8"-16 SST Hex Nut	4 per bench

NEEDED FOR INSTALL

Lifting Straps
9/16" Socket or Box Wrench
Epoxy (or chemical anchor)

You can find information about caring for Tournesol products and materials by visiting:

<https://tournesol.com/warranty>

where you can download Care & Maintenance documents.

The Pebble benches utilize a "concealed" mount technique which maintains the aesthetics of the bench while providing a method to secure the benches to the surface they rest upon. The concealed anchor does require planning and some preparation for anchoring.

The concealed mount requires placing the bracket onto the underside of the bench, adding any anchor hardware, preparing the substrate to accept the anchor, and lowering the bench into place. The anchor will vary depending on your install and you should verify with the project/structural engineer which method is to be used. The Pebble benches and anchor bracket allows the option of an epoxy or chemical anchor for a 1/2" coarse thread bolt (attached to the anchor bracket with a hex nut) or a 1/2" coarse threaded rod or rebar that can be captured by the bracket.

Anchor Installation Instructions

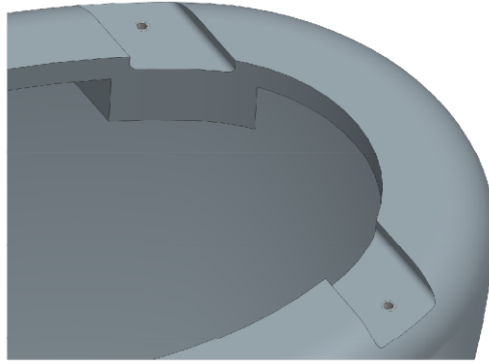


Fig. A) Anchor bracket mounting points (YC-01 underside shown)

STEP 1

The concealed bracket may already be attached to the underside of the bench with 3/8"-16 x 3/4" SST hex bolts and split lock washers. If not already attached, it is a simple operation to install the brackets onto the bench.

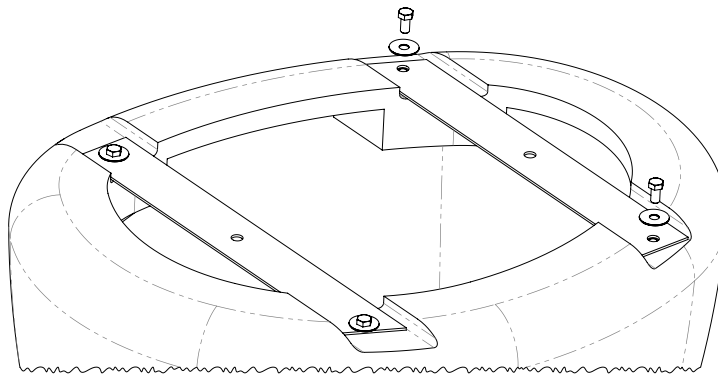


Fig. B) Anchor bracket attachment to mounting points

STEP 2

With the brackets mounted, as noted above, verify the measurements for placement of embedded anchors (see submittal drawings for additional detail).

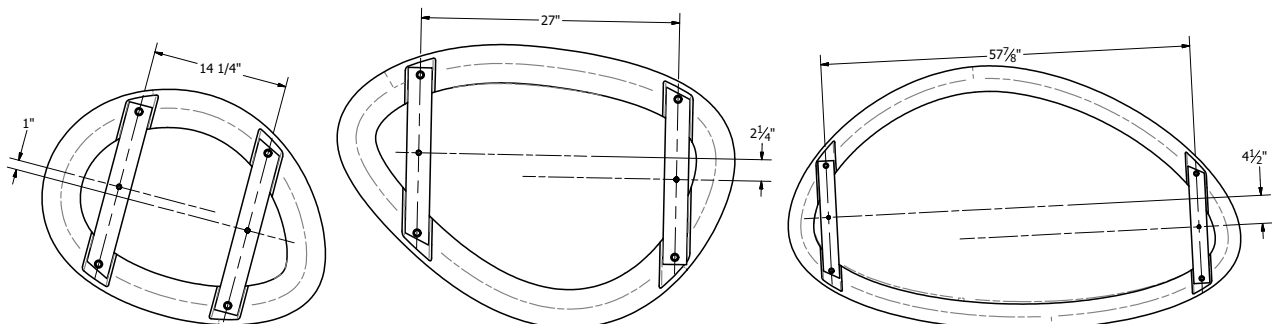


Fig. C) Multi-Point anchorage (bottom view)

STEP 3

Each bench in the Pebble collection is unique and so the anchor points for each bench will be different. Consult the submittal drawing for the anchor point details relative to the bench outline. The dimensions in the submittal are approximate. Verify measurements and placement of anchors on each completed bench and bracket assembly before drilling or embedding any anchor hardware.

Anchor Installation Instructions

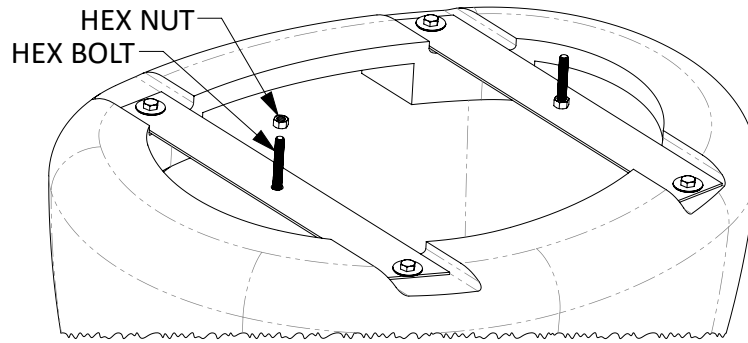


Fig. D) ½"-13 SST Hex Bolt and ½"-13 SST Hex Nut for Epoxy or Chemical Anchor

If the anchor points have not already been placed, with the bench raised (safety strapping for moving/lifting), mark the location of the anchor holes or bolts (if those have already been attached). Another method would be to create a cardboard template with the overall shape of the bench, mark, and then cut out holes to locate the anchor points. The template can then be used to mark the anchor points of the bench and re-used if the bench is used multiple times.

STEP 4

With the locations marked, either drill a hole approx. 1 to 1-1/2" in diameter if for an epoxy or chemical anchor for the ½" bolt or place a ½" threaded rod or rebar per the anchor manufactures instruction. For the chemical or epoxy anchor, fill the holes and then lower the bench into place. If a protruding threaded rod is used, the bench can only be placed enough to allow a nut to be placed on the threaded and treaded partially as there will be no access once the bench is completely lowered. The rebar should have a small bend to capture the anchor brackets. Both of these methods secure the bench, but allow some movement as they may not be fully engaged.