

Installation Instructions



You can find information about caring for Tournesol products and materials by visiting: <https://tournesol.com/warranty> where you can download Care & Maintenance documents.

INCLUDED

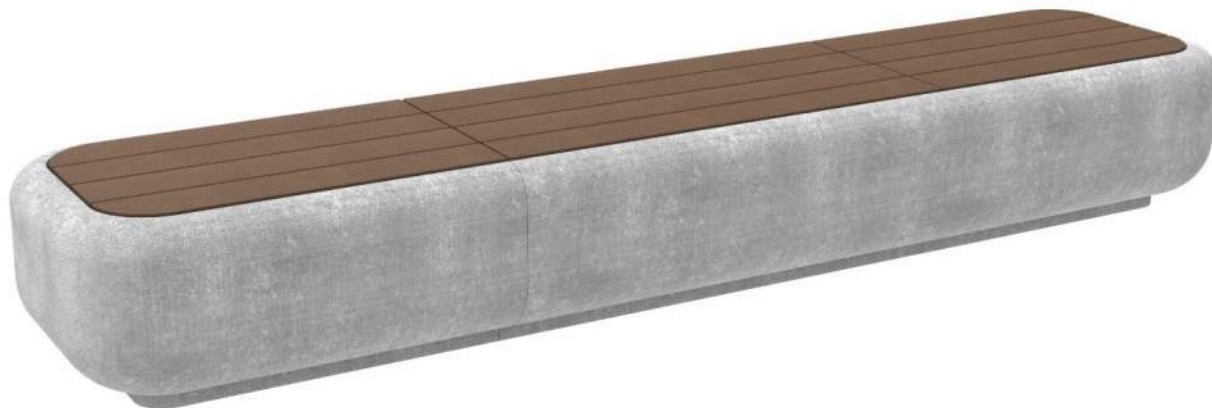
| | |
|----------------------------------|----------|
| Montara Seating Base | 1 pc. |
| Montara Seating Top | 1 pc. |
| 1/4"-20 Socket Head Cap Screw | 4-8 pcs. |
| 1/4"-20 Hex Nut | 4-8 pcs. |
| LINEAR SEGMENTS ONLY (per joint) | |
| 3/8"-16 Hex Bolt | 4 pcs. |
| 3/8"-16 Hex Nut | 4 pcs. |
| 3/8" Flat Washer | 8 pcs. |

NEEDED FOR INSTALL *Not included*

3/8" Non-Corrosive Anchor Hardwar (type of anchor dependent upon site...consult with your project manager).

TOOLS *Not included*

1/4" hex drive wrench (attachment of top)
9/16" hex socket and/or open/box wrench
Clamps (non-marring)
Marker

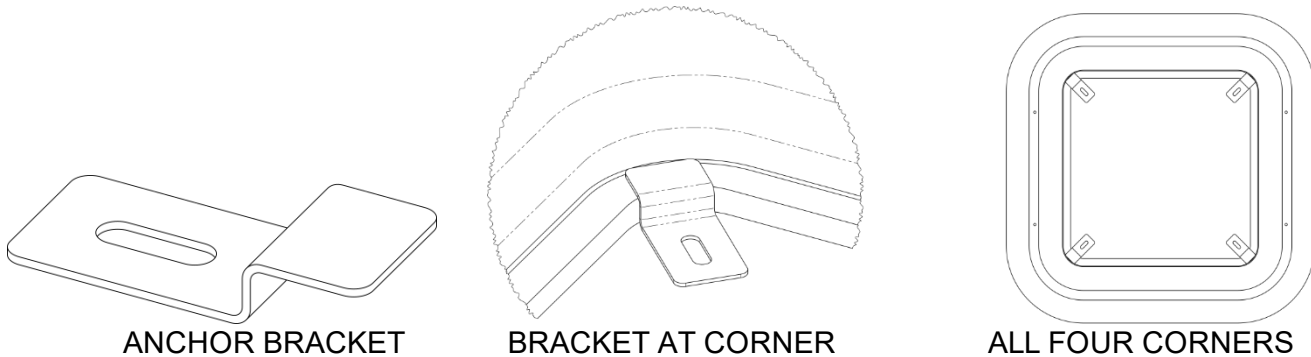


Installation Instructions

Stand-Alone Platform or Bench

STEP 1

After unloading and inspecting the seating base, place it in the location where it will be permanently affixed. With the base placed into position and leveled (using appropriate shims or other leveling aid), set the anchor brackets that came with the unit or it's wood top into the corners on the interior. These are simple z-clips where the non-slotted leg rests on the interior lip of the base so that the slots can accept the anchors. If the wood top assembly has been attached, it must be removed to access the anchor points.



Note: When installing a group of linear benches, complete this step and skip to Step 6 of this instruction.

STEP 2

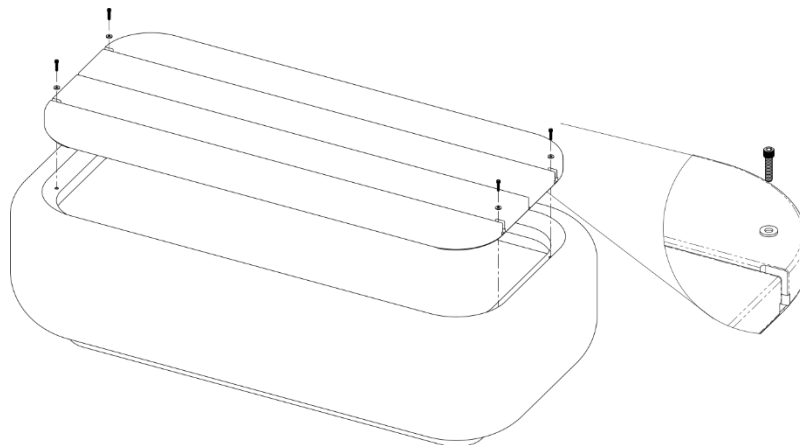
Mark the locations of the anchors where the anchor brackets are located onto the slab, deck or other solid substrate that the base rests upon. Prepare the surface for accepting the anchors (by others). This may require moving the base of the unit to improve access, if needed.

STEP 3

Either install the anchors and then place the base and anchor brackets into position or install the anchors with the base and brackets in place. Refer to your project management directions for the type of anchor required.

STEP 4

With the GFRC base of the unit secured via the anchor brackets and anchors, install the wood top assembly. This is accomplished with the provided stainless steel hardware (socket-head cap screw and washer) in each location where there is a slot in the metal framework that aligns with an embedded threaded insert in the top lip of the base. Do not tighten the bolts until all are installed as the top may need to be adjusted to align the hardware with the base and for an even gap all around the top.



Installation Instructions

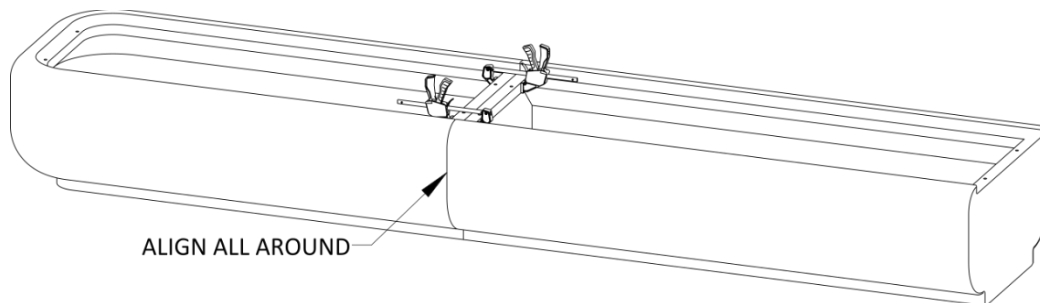
STEP 5

With all hardware installed, hand-tightened using the ¼" hex driver to a snug fit. Do not over-tighten!

Linear Bench Group

STEP 6

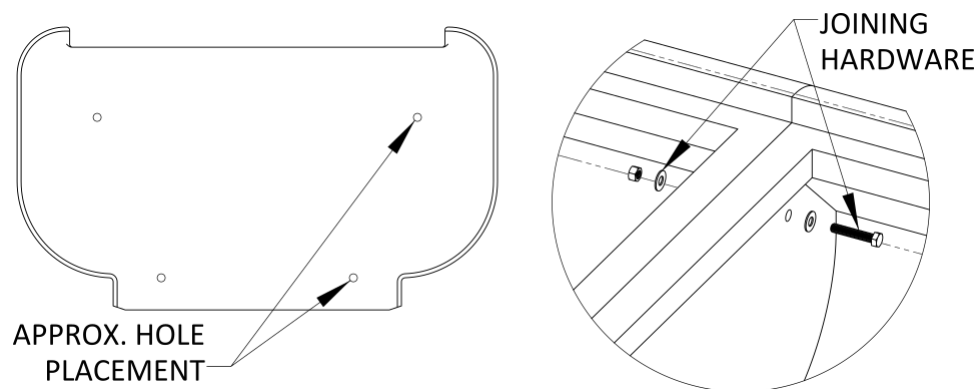
When installing a group of linear benches, it's necessary to attach the different bench segments to one another before anchoring the entire group. With the bench bases in position (refer to your project plan and layout for each type and size of bench segment for proper location) start at one end (first and second segment) and align the segments at the joint. Level the units as you progress.



Clamp the two segments together once aligned and drill four 3/8"-1/2" holes through both adjoining walls using a quality masonry bit. Take care to reduce break-out on the opposite wall being drilled. Two of the holes should be near the top and two near the bottom and all should be as close as possible to the side walls while maintaining enough clearance for the joining hardware (included with your order).

STEP 7

Install the joining hardware through the two base walls using 9/16" wrenches on both sides to ensure the bench segments are snug to one another and aligned properly before final tightening of the hardware. With the hardware tightened and the segments secure to one another, continue this step for each subsequent joint between bench segments.



Once all linear bench segments are secured in the desired layout, return to step two (STEP 2) for anchoring and wood top installation.

NOTE

It may be necessary to locate the anchor points prior to attaching adjacent bench segments to allow more access for drilling anchor points into the substrate.