

Assembly Instructions

This instruction is a guide to installing a Laser Cut Panel on a planter.

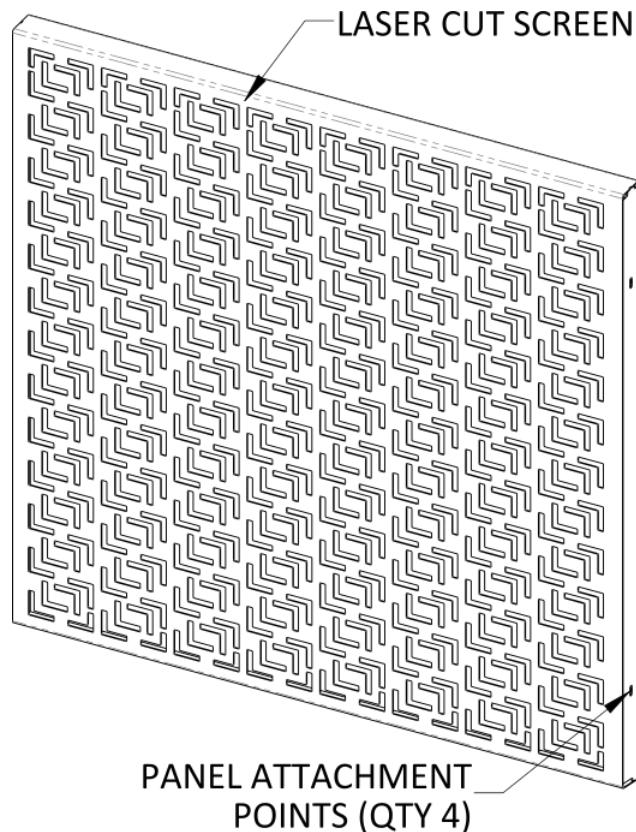
PARTS/HARDWARE LIST

Panel (WXS)	Qty. 1
Upright Bracket	Qty. 2
¼-20 SST Flathead Screw	Qty. 4
¼" SST Lock Washer	Qty. 4
¼ SST Flat Washer	Qty. 8
¼-20 SST Hex Nut	Qty. 4
¼-20 SST Hex Bolt	Qty. 4

NEEDED FOR ASSEMBLY *Not included*

- 3/16" Hex Driver
- 7/16" Socket or Box Wrench or Ratchet-drive Socket
- Silicone Sealant

You can find information about caring for Tournesol products and materials by visiting: <https://tournesol.com/care> where you can download Care & Maintenance documents.



Laser cut screens provide mounting locations on both sides (ends) of the panel and are compatible with all three Tournesol Upright Bracket designs that facilitate assembly onto a Tournesol planter. The upright bracket is determined by the type (material) of the planter.

Assembly Instructions

Upright Brackets are sold separately and must be specified with the type of Tournesol planter ordered:

- FRP: Fiberglass Planter
- GFRC: Concrete Planter
- WOOD: Boulevard Wood-clad Planter

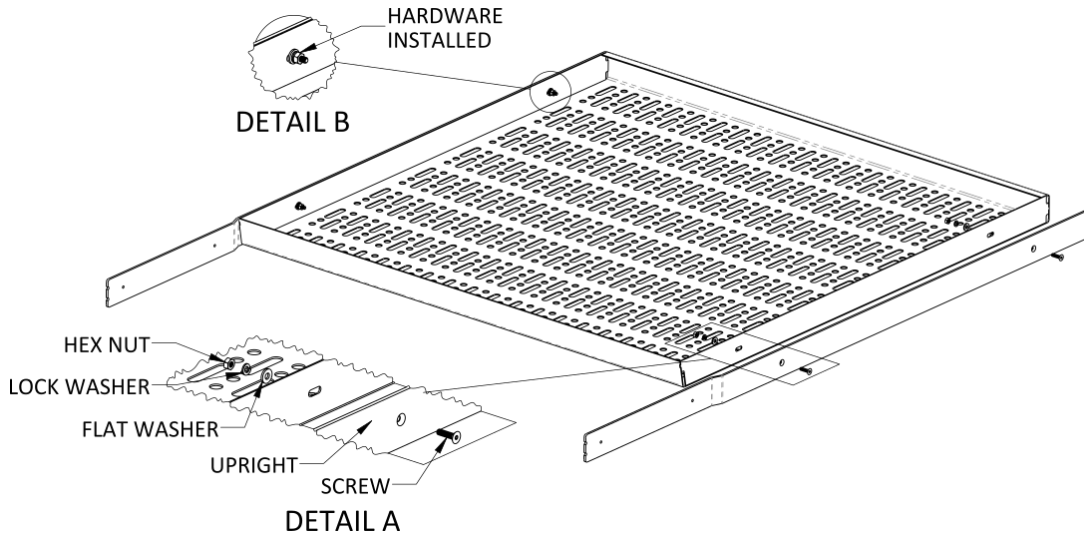


The standard position of the screen, with respect to the planter, is in the middle of the planter. If your configuration is different (offset), the installation will be nearly identical, with the exception of the illustrations in this document for placement of attachment to the planter.

Assembly Instructions

STEP 1

Lay the laser cut panel on a flat surface (shown is a 48"x48"). This allows one person to attach the upright brackets to the panel. The longer leg of the bracket is placed on one side of the 48" edge panel. The upright bracket mounting points should align to the mounting points on the panel and the countersink should face the outside.

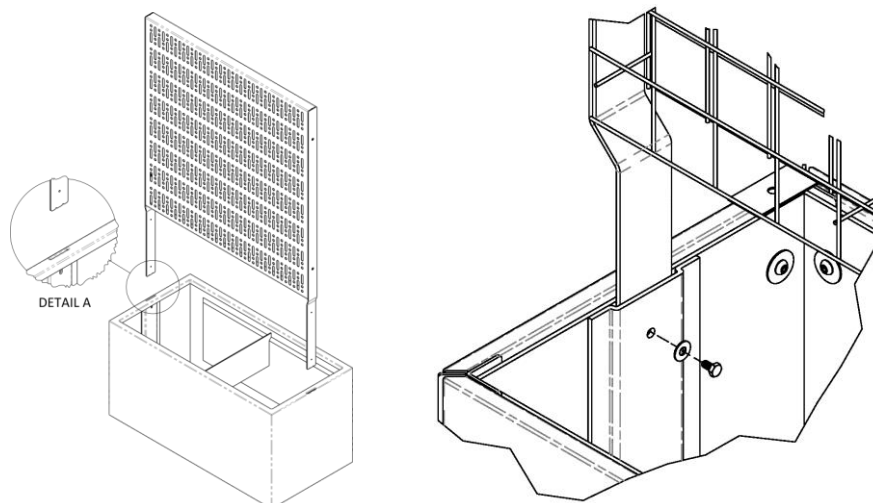


STEP 2

With the holes aligned, insert the flathead screw from the outside of the bracket and through the panel. Place a flat & lock washer over the screw and hand-tighten a hex nut into place. Use your tools to secure the hardware once all hardware are in place and ensure the brackets are aligned straight with the panel.

STEP 3

This step may require two people to complete easily, especially for longer panels. With the upright brackets attached to the panel, and the planter sitting upright, lift the assembly and place the brackets into the pockets at the ends of the planter. Some maneuvering may be required as there may be slight interference between the brackets and the pocket inside the planter. Slightly rock the assembly back and forth or to and fro to allow the bracket to slide to the bottom of the pocket.



Assembly Instructions

NOTE: Before securing the panel to the planter and as added protection from the elements, a silicone sealant should be applied to the flat washer as it is slid over a hex screw to seal between the head of the screw and the washer. Apply another bead of silicone to the side of the washer that will go against the planter.

With the brackets in the planter pocket, align the pocket hole with the bracket holes and insert the hex screw with a flat washer. Hand-tighten the screw and repeat for all four screw positions (2 per pocket/bracket). Using your tools, secure the hex screws in place. Although the hardware is stainless steel, added protection can be provided by covering the hardware with the same silicone sealant prior to placing any soil in the planter.

Note: A level could be placed on top of the panel and small adjustments can be made while final tightening of the hex screws is completed.

