

STANDARD B-2 BOLLARD

APPROVAL:

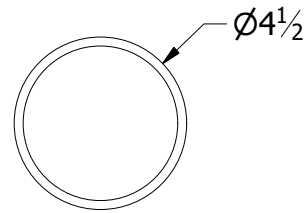
Signature authorizes Tournesol Siteworks to manufacture the product as shown

SIZE AND THICKNESS

ALL STANDARD BOLLARDS MADE IN POWDER-COATED MILD STEEL W/ZINC-RICH PRIMER

BOLLARD

4"

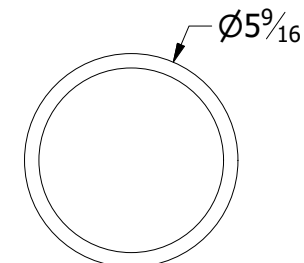
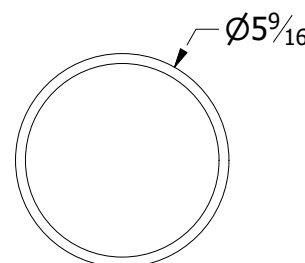
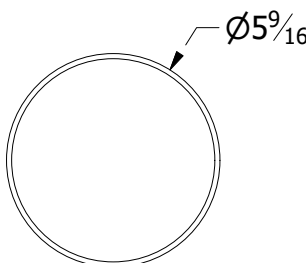


4" SCH 40 MS

4" SCH 40 SS

BOLLARD

6"



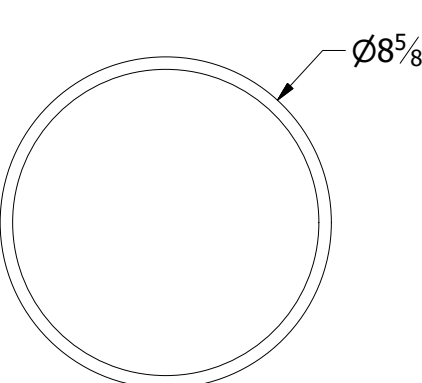
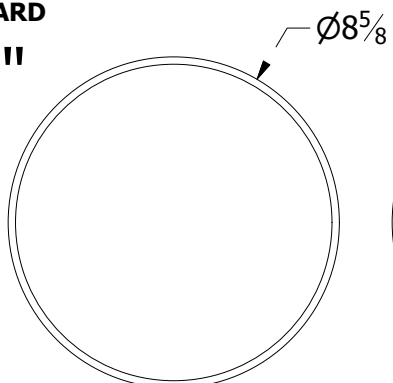
5" SCH 10 MS

5" SCH 40 MS

5" SCH 80 MS

BOLLARD

8"



8" .188" MS

8" SCH 40 MS

HEIGHT

30"

36"

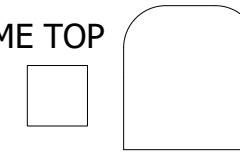
42"

48"

CUSTOM
(SEE PAGE 2)

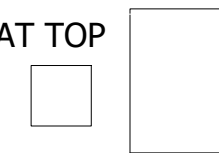
TOPS AVAILABLE

DOME TOP



SURFACE MOUNT (SM)

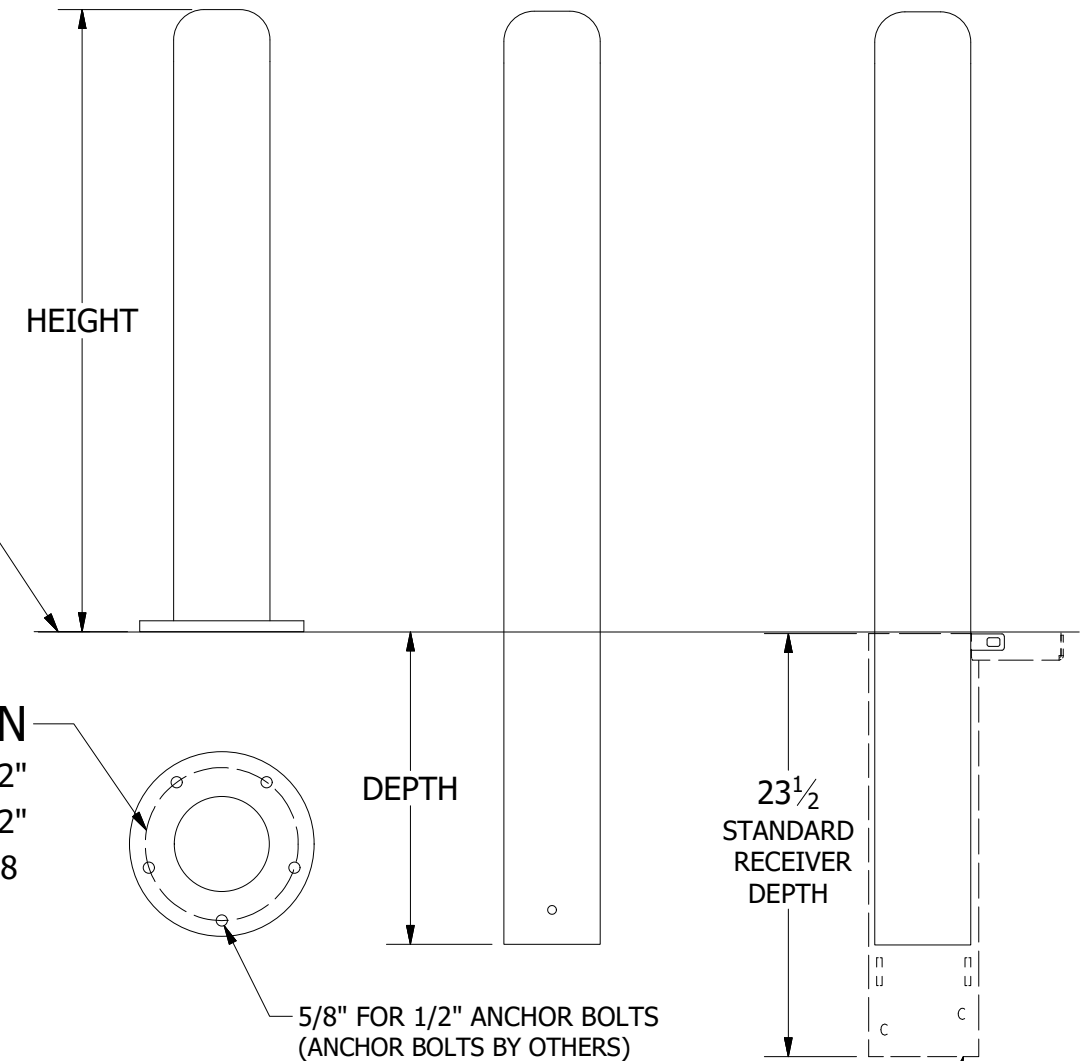
FLAT TOP



EMBED

REMOVABLE (REM)

MOUNTING



HOLE PATTERN

4" BOLLARD = 4 BOLTS AT Ø 6 1/2"

6" BOLLARD = 5 BOLTS AT Ø 8 1/2"

8" BOLLARD = 5 BOLTS AT Ø 11 7/8"

STANDARD DEPTH

4" BOLLARD = 12" DEEP FOR REMOVABLE, 18" DEEP FOR EMBED

6" BOLLARD = 18" DEEP

8" BOLLARD = 18" DEEP

CUSTOM (SEE PAGE 2)

EXCEPT FOR REPLACEMENTS, ALL REMOVEABLE BOLLARDS REQUIRE A RECEIVER (SOLD SEPERATELY), INQUIRE FOR DETAILS.

COMPANY NAME: _____
 CLIENT NAME: _____
 DATE: _____
 QUANTITY: _____
 COLOR/FINISH: _____

TOURNESOL SITWORKS 2930 Faber Street Union City, CA 94587		TITLE	B-2 APPLICATION SHEET
SIZE	DWG NO	REV	
B	B-2 APPLICATION SHEET	B	
ALL DIMENSIONS IN INCHES		SCALE: 3/32	DRAWN: DM
		7/21/2017	SHEET: 1 OF 2

B-2 BOLLARD OPTIONS

(FOR FURTHER CUSTOMIZATION, CONTACT YOUR SALES PERSON)

APPROVAL:

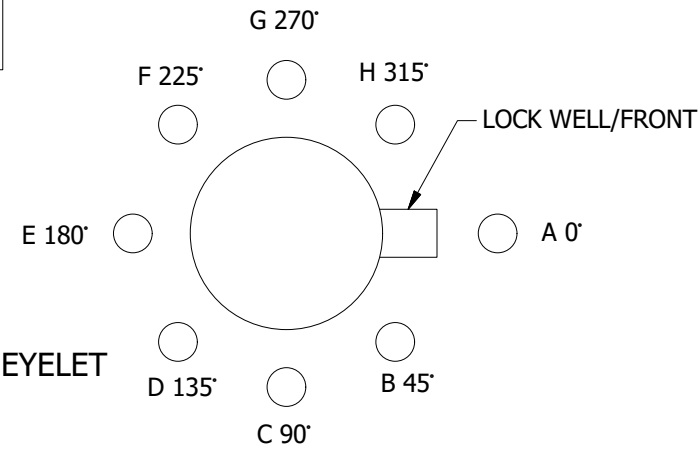
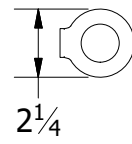
Signature authorizes Tournesol Siteworks to manufacture the product as shown

EYELET (B-EB) (IF NONE WANTED LEAVE BLANK)

Quantity: _____ Number of EYELETS

Placement: _____ " Height from the ground to the center of EYELET

Orientation(s): Shade in bubbles to indicate position



B-HTG _____ (IN)
(CUSTOM HEIGHT)

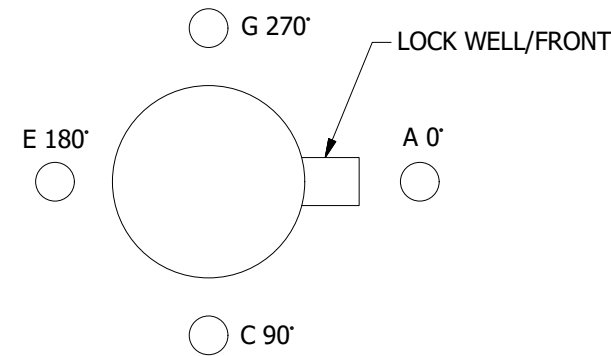
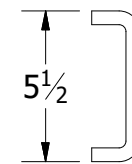
HANDLE (B-HD) (IF NONE WANTED LEAVE BLANK)

CHOOSE HOW MANY

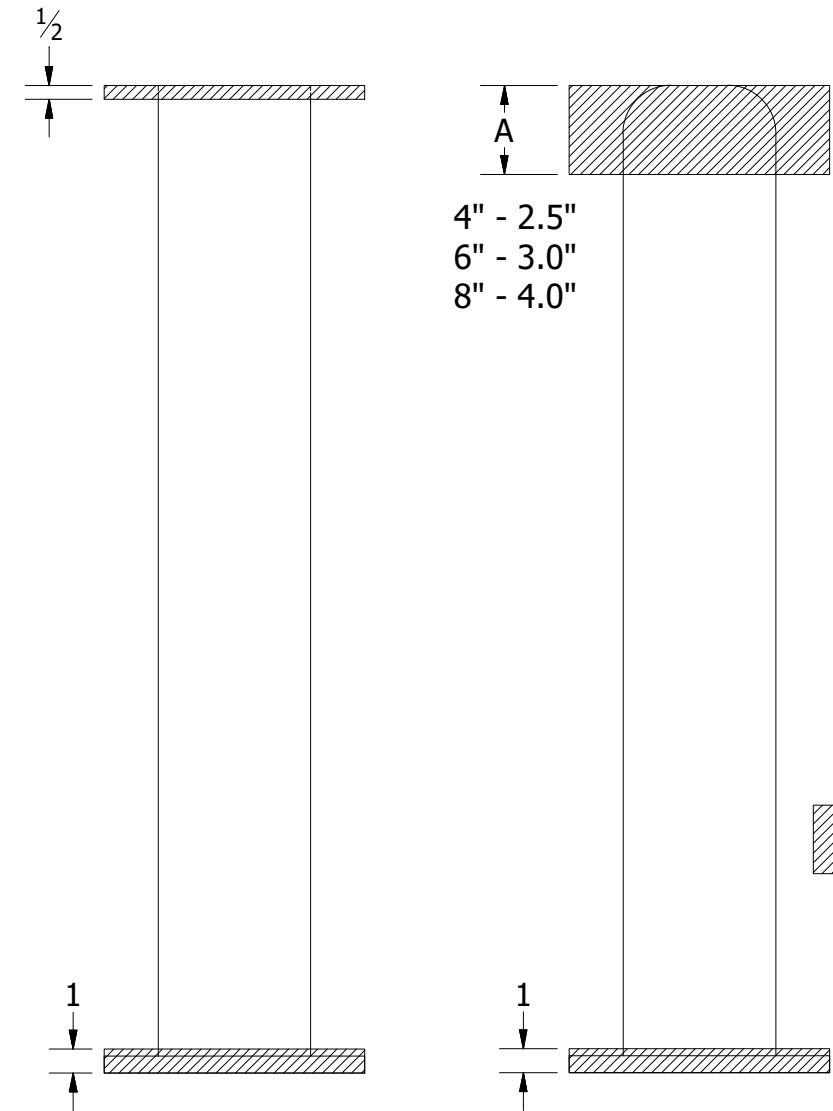
1 HANDLE 2 HANDLES

Placement: _____ " Height from the ground to the center of HANDLE

Orientation(s): Shade in bubbles to indicate position



B-EXT _____ (IN)
(CUSTOM DEPTH)
(FOR EMBED OR REM)



TAPE (B-TAPE) (IF NONE WANTED LEAVE BLANK)

CHOOSE A WIDTH

1" TAPE 2" TAPE OTHER SIZES AVAILABLE

CHOOSE A COLOR

HIGH INTENSITY IN RED WHITE YELLOW

ADDITIONAL ROW OF TAPE

Width _____

Type _____

Color _____

Placement _____ "

ADDITIONAL ROW OF TAPE

Width _____

Type _____

Color _____

Placement _____ "

Placement: _____ " Height from the ground to the center of TAPE

COMPANY NAME: _____
 CLIENT NAME: _____
 DATE: _____
 QUANTITY: _____
 COLOR/FINISH: _____